



MARYLAND SEFEL PYRAMID MODEL Newsletter

October 2020

WHAT'S NEW?



Pyramid Model

Equity Coaching Guide

By Jolene Ferro, Lise Fox,
Denise Binder, and Meghan von der Embse



ChallengingBehavior.org

Equity Coaching Guide

The Pyramid Model Equity Coaching Guide provides the classroom coach with a reflection tool to examine the implementation of Pyramid Model practices through the lens of culturally responsive practices and identification of implicit bias. The...

[Read more](https://challengingbehavior.cbcs.us...)
challengingbehavior.cbcs.us...

Behavior Incident Report System:

Data-Based Decision-Making Guide



Data Decision-Making

Home Implementation Data Decision-Making Behavior Incident Report System The Behavior Incident Report System (BIRS) provides early care and education programs and classrooms with a system to collect and analyze behavior incidents in their program.

[Read more](#)
challengingbehavior.cbcs.us...



Start with Equity: From the Early Years to the Early Grades

Millions of young children are disproportionately underserved, over-punished, and barred from high-quality education in American schools.

[Read more](#)
childandfamilysuccess.asu.edu

TRAINING AND COACHING ACTIVITIES

After a brief pause in SEFEL Pyramid Model training with the shift to tele-work during COVID-19, virtual training is back up and has been booming over the summer and into the fall. Throughout the summer, virtual trainings in the Pyramid Model have occurred in Montgomery, Queen Anne's, Prince George's, Talbot, Frederick and Washington Counties. Way to go Pyramid Model trainers.

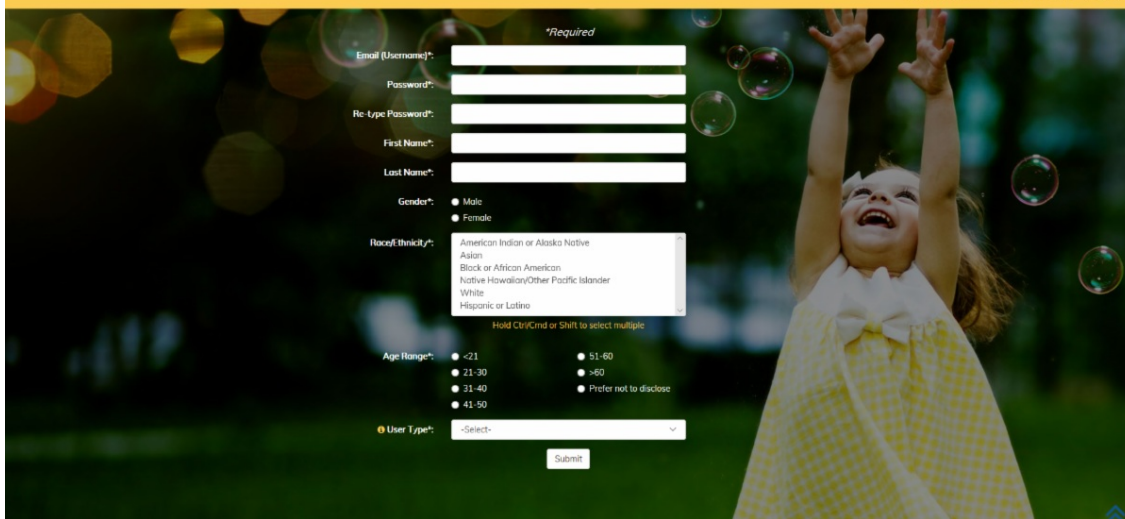
Coaching, an important part of Pyramid Model implementation, is scheduled to start the month in Frederick, Harford and Queen Anne's counties.

If you are a **Maryland State Approved Pyramid Model Trainer**, please check out the recording of a webinar delivered at the beginning of May on how to make your Pyramid Model trainings virtual (located under the resources tab of the [Trainers Corner](#)).

****Help us tell our state story! Register for the state SEFEL Outcomes Monitoring System (OMS) and start entering your training and coaching data today.**

We are at the end of the quarter so please enter any data from July to September before October 15th for it to be counted in this quarter's statewide report

SEFEL OMS



***Required**

Email (Username)*:

Password*:

Re-Type Password*:

First Name*:

Last Name*:

Gender*: ☐ Male ☐ Female

Race/ethnicity*:

- American Indian or Alaska Native
- Asian
- Black or African American
- Native Hawaiian/Other Pacific Islander
- White
- Hispanic or Latino

Hold Ctrl/Cmd or Shift to select multiple

Age Range*: ☐ <21 ☐ 21-30 ☐ 31-40 ☐ 41-50 ☐ 51-60 ☐ >60 ☐ Prefer not to disclose

User Type*:

STATE LEADERSHIP TEAM

The State Leadership Team continued to meet during this month, with a focus on how to continue to support the work of addressing the needs of children's social and emotional health while they are out of classrooms. Additionally, significant conversation focused on the role of the PM to address and support the elevation of strategies to address equity and anti-racism in the classroom, following the protests against police brutality and racism.

[Read Minutes from the most recent State Leadership Team Meeting](#)

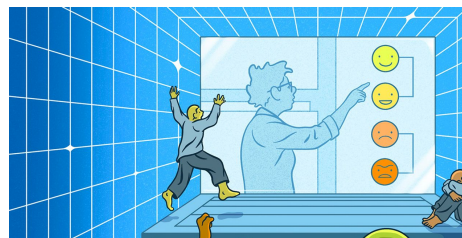
EARLY CHILDHOOD NEWS



Survey: How Pandemic Schooling Affects Early Childhood...

Defending the Early Years is an organization whose stated mission "is to work for a just, equitable, and quality early childhood education for every young child, by informing educators, administrators, and parents about how children develop and...

[Read more](#)
www.forbes.com



Social and Emotional Learning Has Never Been More...

There may be no more critical time than now to teach children to regulate their emotions. And yet there's probably no time more challenging, as districts around the country begin the school year remotely. Social and emotional learning-the process ...

[Read more](#)
www.wsj.com

PROFESSIONAL DEVELOPMENT

Looking to brush up on your SEFEL Pyramid Model Knowledge?

Don't forget to check out our online trainings! The trainings are self paced and are all approved for up to 18 MSDE COK clock hours. The Preschool Modules were updated in 2019 and include great new information about social and emotional development with new technology to make a fun and engaging online training experience.

Click on the link below to access the trainings!



Online Training | Maryland SEFEL Pyramid Model | United...

Training and Support provides information on online training courses, IECMH Consultation, and requesting or submitting an in-person training

[Read more](#)

www.mdpyramidmodelsefel.org



The 2020 Maryland Family Engagement Summit Webinar...

Thank you for joining us for the 2020 Maryland Family Engagement Summit Webinar Series! The second webinar in the series, "Mental Health and Trauma," presentation is available below-featuring Dr. Howard Stevenson, the Constance Clayton Professor...

[Read more](#)

marylandfamiliesengage.org



Eva Marie Shivers -Racial Inequity Interview

Please Note: this interview took place right before the police brutality and BLM protests started late May of 2020. Dr. Stroud facilitates an enlightening an...

[Read more](#)

www.youtube.com



Project Security Blanket

Project Security Blanket provides training and technical assistance for Maryland child care center staff members, family child care providers, and informal providers on the development of a written emergency plan for their programs. The project...

[Read more](#)

www.projectsecurityblanket.org



MARYLAND
FAMILY
NETWORK

Statewide Training Calendar

Statewide Training Calendar for child care providers in Maryland.

[Read more](#)

www.marylandfamilynetwork.org

STRATEGIES CORNER

RSVP Helping Your Child to Understand and Manage Emotions-Virtual Parent Workshop 10.7

This virtual parent workshop will be held on Wednesday October 7th at 6:30 PM. We will use the information provided to send you reminders and an invitation to join. This workshop is only for RME families with children birth up to age 5.

* Required



RSVP Helping Your Child to Understand and Manage...

This virtual parent workshop will be held on Wednesday October 7th at 6:30 PM. We will use the information provided to send you reminders and an invitation to join. This workshop is only for RME families with children birth up to age 5.

[Read more](#)

docs.google.com





Infant and Toddler Critical Competencies

© 2020 Maryland State Department of Education Division of Early Childhood

[Read more](#)
earlychildhood.marylandpubl...

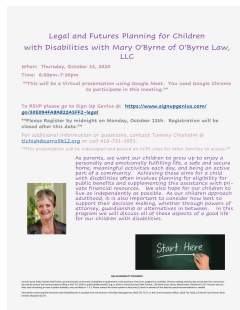
Does quality early childhood education lead to more...

Yes, many studies have found that quality early learning experiences contribute to people's success as adults.

[Read more](#)
thesciencebehindit.org

UPCOMING EVENTS

Click on the image to view each flyer.



The FREDLA Board of Directors and Staff cordially invite you to attend the virtual 2020 event Leadership into the Future.

This exciting event will include a national perspective from SAMHSA, a renowned keynote speaker, awards and scholarships. If you want a preview of FREDLA 2021 and new resources for your use, [REGISTER TODAY](#) and reserve your seat!

Click the ticket below for more details!



Where

The National Center for Pyramid Model Innovations (NCPMI) and the Pyramid Model Consortium (PMC) are pleased to bring you this unique and inspiring professional development experience. NTI's format is designed to provide an in-depth learning...

[Read more](http://nti.cbcs.usf.edu)
nti.cbcs.usf.edu



SOCIAL & EMOTIONAL LEARNING
EXCHANGE 2020
hosted by 

2020 SEL Exchange | October 14-16, 2020

The 2020 SEL Exchange, hosted by the Collaborative for Academic, Social and Emotional Learning (CASEL), will be October 14-16, 2020 in the Chicagoland area.

[Read more](http://selexchange.casel.org)
selexchange.casel.org

Please email [the PIEC Team](mailto:thePIECTeam@case.org) to have any upcoming trainings or events you are hosting featured in the newsletter!

Share Anything About Your Work With Us!



[Click here to reach us](#)

SEFEL Pyramid Model in Maryland

[Visit our website](#)

Come follow us on social media where we share week-day posts surrounding positive social emotional learning.



Facebook:
Maryland
Pyramid
Model

www.facebook.com/MDPyramidModel



Instagram:

@MDpyramidmodel
www.instagram.com/mdpyramidmodel



Twitter:
@MDpyramid

www.twitter.com/mdpyramid

www.mdpyramidmodelsefel.org