



MARYLAND SEFEL PYRAMID MODEL Newsletter

March 2020

SEFEL Pyramid Model in Maryland

[Visit our website](#)



Facebook:
Maryland
Pyramid Model
www.facebook.com/MDPyramidModel



Instagram:
@MDpyramidmodel
www.instagram.com/mdpyramidmodel



Twitter:
@MDpyramid
www.twitter.com/mdpyramid

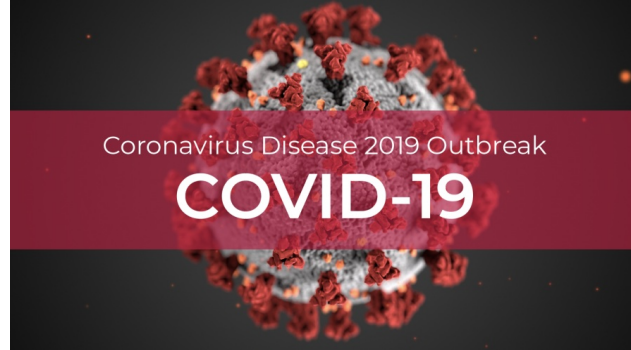
Greetings Maryland Pyramid Model Community:

During this unprecedented time, while classrooms are empty and families are worried as our communities and governments advise for precautions during this COVID-19 public health response – we wanted to dedicate our monthly newsletter this March to cultivate related resources for you, your teams and your networks. Please also contact us to tell us about the ways you are seeing your programs and communities adaptively and creatively meet the needs of the youngest, most vulnerable and their families.

With support and grace,

The Institute's PIEC Team

WHAT'S NEW?



Emergency Resources

The following are resources to support families in helping young children cope with the challenges that might occur during stressful emergency or disaster situations. This website will be updated as we obtain more resources. Let's work as a...

[Read more](#)
challengingbehavior.cbcs.us...



Child Care in Maryland During COVID-19 State of Emergency

Information For Child Care Programs on Coronavirus Disease 2019 (COVID-19) We understand staff, parents, and children may have questions and concerns about COVID-19.

[Read more](#)
earlychildhood.marylandpubl...

Talking With Children:

TIPS FOR CAREGIVERS,
PARENTS, AND TEACHERS
DURING INFECTIOUS DISEASE
OUTBREAKS

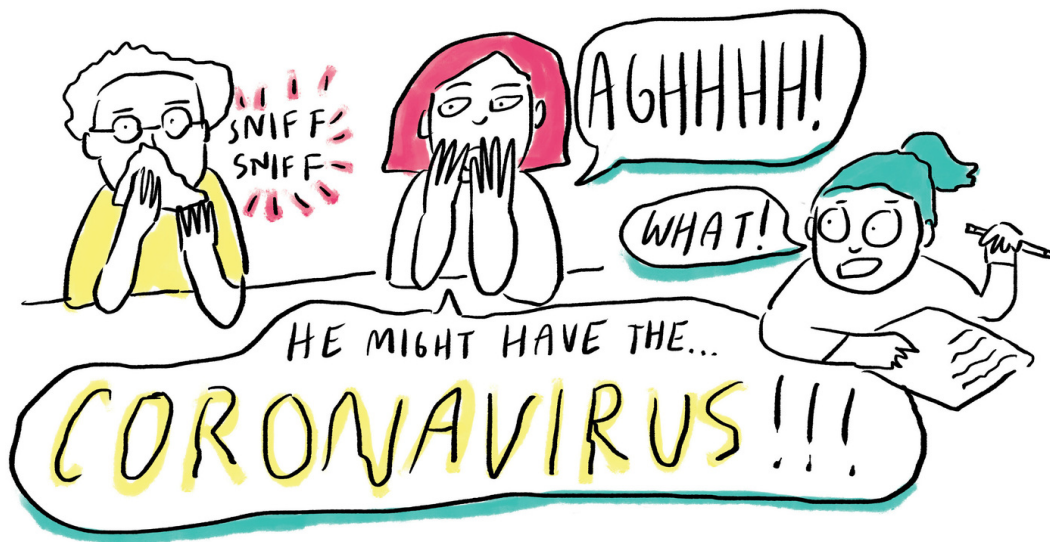
[Read more](#)
store.samhsa.gov

World Health Organization

Mental Health and Psychosocial
Considerations During COVID-19
Outbreak

[Read more](#)
www.who.int

Just for Kids: *A Comic Exploring the New Coronavirus*



Just For Kids: A Comic Exploring The New Coronavirus

Kids, this comic is for you. It's based on a radio story that NPR education reporter Cory Turner did. He asked some experts what kids might want to know about the new coronavirus discovered in China.

[Read more](#)
www.npr.org

TRAINING AND COACHING ACTIVITIES

In the month of March, **training activities** occurred in the following jurisdictions:

1. Harford County
2. Howard County

3. Montgomery County

Coaching activities to support early intervention providers occurred in Baltimore City and 10 Public Pre-K classrooms were supported by direct SEFEL Pyramid Model Coaching in Harford and Montgomery counties. Also in Harford and Montgomery counties, 3 [TPOTs](#) were administered in Pre-K classrooms to support high fidelity implementation of the model.

****Help us tell our state story!** Register for the state Outcomes Monitoring System (OMS) and start entering your training and coaching data today.

SEFEL OMS

SEFEL OMS

ABOUT SEFEL REQUEST ACCESS LOGIN

*Required

Email (Username)*:

Password*:

Re-type Password*:

First Name*:

Last Name*:

Gender*: ☐ Male ☐ Female

Race/Ethnicity*:
Asian
Black or African American
Native Hawaiian/Other Pacific Islander
White
Hispanic or Latino
Hold Ctrl/Cmd or Shift to select multiple

Age Range*: ☐ <21 ☐ 21-30 ☐ 31-40 ☐ 41-50 ☐ 51-60 ☐ >60 ☐ Prefer not to disclose

User Type*:

Submit

STATE LEADERSHIP TEAM

The self-assessments tool “*State Leadership Team Benchmarks of Quality*” has been conducted to assess progress and plan future action. It consist of 5 critical elements and subcategories that are crucial in assessing and exploring potential barriers in the implementation of Evidence Based Practices.

The State Leadership Team agreed that the overarching priority for collective work throughout the year was to focus on: Starting up implementation and then demonstration sites throughout the state and discussed the idea of regional hubs for this. This aligns with the work that MSDE funded SSIP funds have supported in Cecil, Howard, Frederick and Montgomery Counties as well as the MSDE funded Pyramid Model Master Cadre work.

Read Minutes from the March State Leadership Team Meeting

PROFESSIONAL DEVELOPMENT

**Managing Infectious Diseases in Early Education
and Child Care Settings:
*A Learning and Training Tool***



What does infection mean? What does contamination mean?



Healthy Futures - Managing Infectious Diseases

Susan S. Aronson, MD, FAAP

[Read more](https://www.youtube.com/watch?v=...)
www.youtube.com

Guidance for School Settings: *Before and During an Outbreak*



Coronavirus Disease 2019 (COVID-19) - Resources for K-12 ...

Before and During an Outbreak Encourage your staff or community members to protect their personal health. Post the signs and symptoms of COVID-19pdf icon : fever, cough, shortness of breath. Encourage people to stay home when sick. Clean surfaces ...

[Read more](https://www.cdc.gov)
www.cdc.gov

Coronavirus Webinar Recording: *Resources for Child Care and Advice from the Field*



Coronavirus Webinar: Resources for Child Care and Advice ...

Child Care Aware® of America has been hearing from Child Care Resource and Referral (CCR&R) agencies and child care providers who are looking for information...

[Read more](#)
www.youtube.com

STRATEGIES CORNER

10 Prop Box Ideas: *Mini Learning Centers at Home*



10 Prop Box Ideas: Mini Learning Centers at Home

Bring the spirit of learning centers into your home with prop boxes-plastic bins or cardboard shoe boxes you fill with materials and props related to one topic, such as math or writing.

[Read more](#)
www.naeyc.org

Preschool Inspirations: *The Best Kid Yoga Videos*

KIDS YOGA VIDEOS ROUNDUP OF THE BEST



The Best Kid Yoga Videos

here. Kid Yoga videos are giving teachers and parents an incredible tool to help children learn to: I must admit I was a bit skeptical to jump on the kid yoga bandwagon. Did it really work? We started doing family yoga, and my kids loved it.

[Read more](#)
preschoolinspirations.com

Brain Building Resources



Vroom: Everyone has what it takes to be a Brain Builder!

Did you know that parents and caregivers already have what it takes to become brain builders with their children? This inspiring video illustrates this conce...

[Read more](#)

www.youtube.com

EARLY CHILDHOOD NEWS

Baby-sized Altruism



The surprising altruism of babies

Finding the best ways to do good. One of the most famous - if contentious - studies in social science is known as the marshmallow test. In the 1970s, that experiment probed kids' ability to delay gratification when faced with a yummy snack.

[Read more](#)

www.vox.com

Task Force Celebrates Release of Early Childhood Education Profession Framework



Task Force Celebrates Release of Early Childhood...

Facilitated by the National Association for the Education of Young Children (NAEYC), fifteen national organizations released the Unifying Framework for the Early Childhood Education Profession. The framework was released this week after...

[Read more](#)
www.ffyf.org

UPCOMING EVENTS

Please email [*the PIEC Team*](#) to have any upcoming trainings or events you are hosting featured in the newsletter!



Webinar - All Hands on Deck: Defining the Role of Mental ...

Infant and Early Childhood Mental Health Consultation (IECMHC) is emerging as an evidence-based intervention for supporting young children's social and emotional development and addressing challenging behaviors. IECMHC aims to improve the ability ...

[Read more](#)
challengingbehavior.cbcs.us...

Share Anything About Your Work With Us!



[Click here to reach us](#)

www.mdpyramidmodelsefel.org